



LEADING IN LPG

ROAD TANKER EQUIPMENT



LPG, LNG, CNG, INDUSTRIAL MANAGEMENT



EQUIPMENT FOR LPG-ROADTANKERS

COMPRESSORS
Type 291 / 161

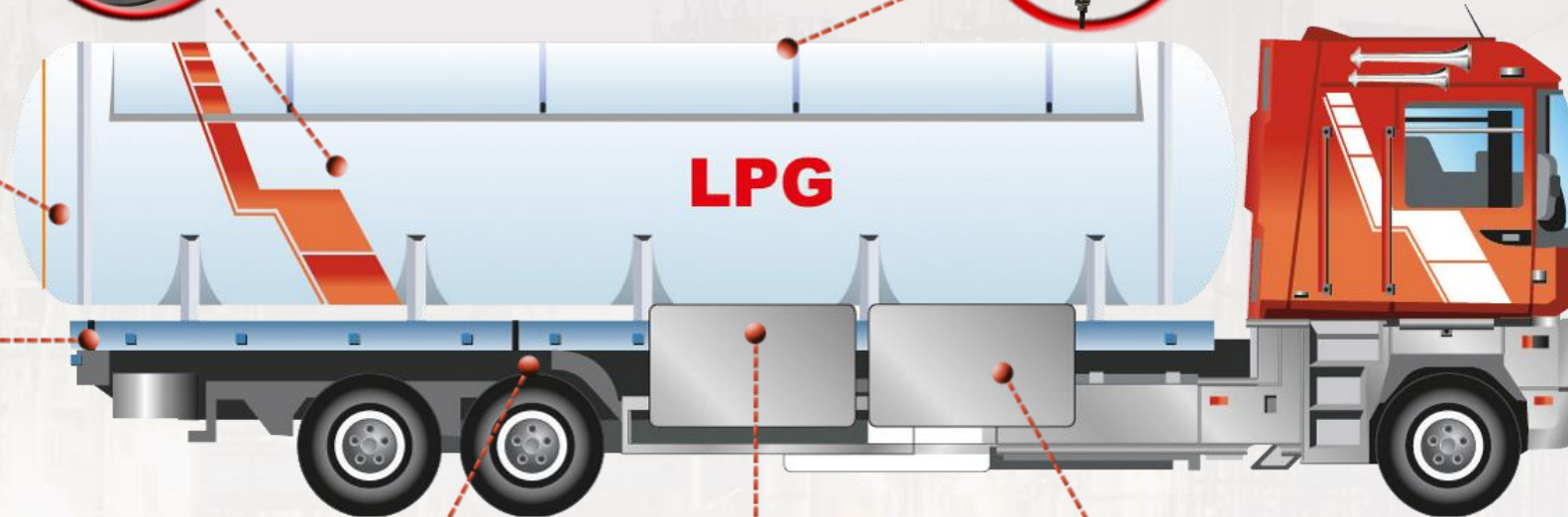


FAS/ROCHSESTER
Liquid level indicators

REGO[®]
Safety Valves



FAS VIP40
Hose Reels



MEASUREMENT TECHNOLOGY

REGO[®]
Internal Valves



PUMPS
Type Z, NZ, LG



EQUIPMENT FOR ROAD TANKERS



CORKEN LPG COMPRESSORS

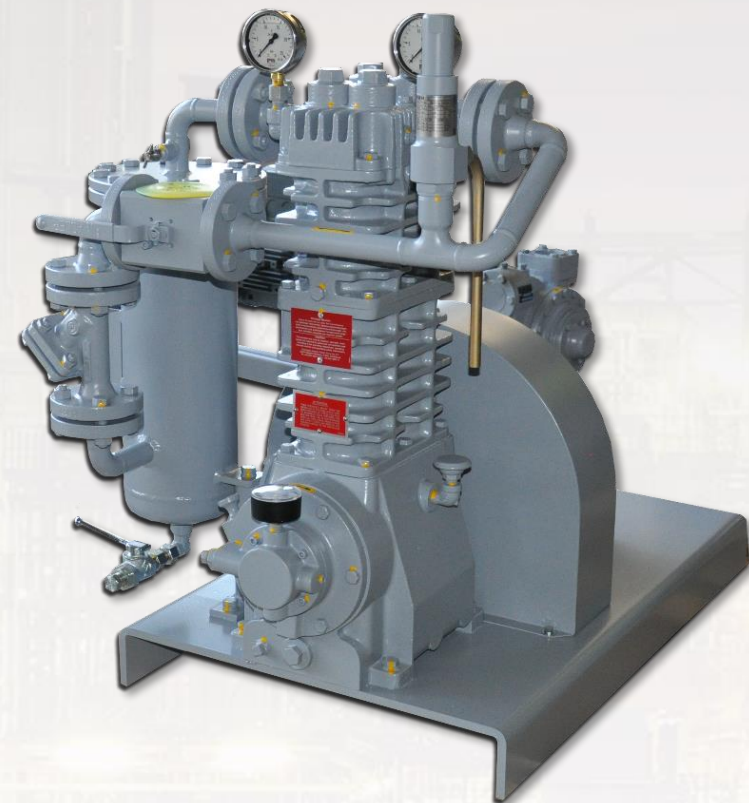
IN ROAD TANKER DESIGN

- LPG Piston compressor
- Max. Displacement 28 m³/h
- Connections = DN20 PN40
- Drive Unit = Hydraulic



Solutions beyond products...

CORKEN
IDEX



EQUIPMENT FOR ROAD TANKERS

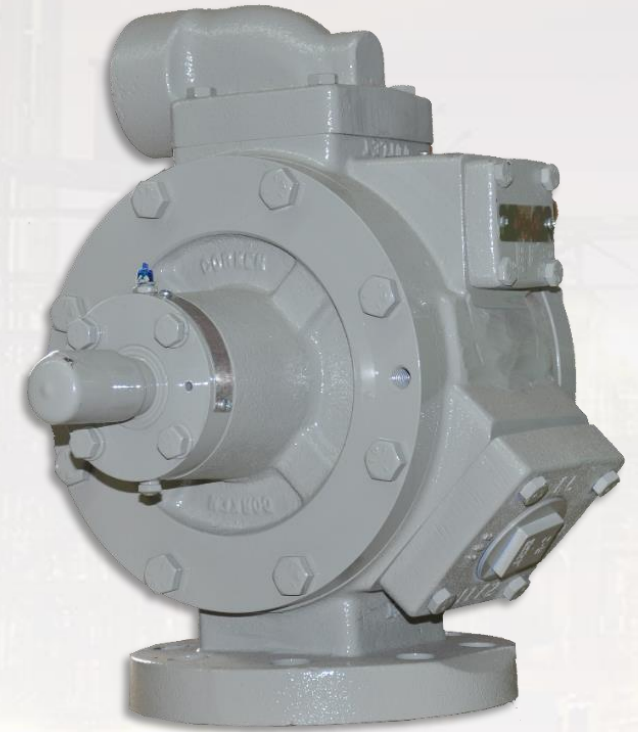


CORKEN LPG-PUMPS

ROAD TANKER DESIGN Z3200 – Z3500 – Z4200

- Vane Pump
- Performance = **490l – 950l/min** at 5 bar differential pressure
- Max. Differential pressure = 8,6 - 10,5 bar
- Connections NPT 3" or 4"
- Direct connections to the internal valve - ANSI-Flange 3" or 4"

Solutions beyond products...
CORKEN
IDEX



EQUIPMENT FOR ROAD TANKERS

➤ **BLACKMER LPG-PUMPS** TYPE LGL

- Vane pump
- Performance = 400l – 950l/min at 5 bar differential pressure
- Max. Differential pressure = 8,6 - 10,5 bar
- Connection NPT 3" or 4"
- Direct Connection ANSI-Flange 3" or 4" to the internal valve

Blackmer[®]



EQUIPMENT FOR ROAD TANKERS

FAS LPG-PUMPS *NZ18-8-STW-H*

- Multistage centrifugal pump
- Nominal flow rate $Q_N = 300\text{l/min}$
- Differential pressure = 8bar
- Max. Flow rate = $18\text{ m}^3/\text{h}$
- Max. Operating pressure = 40bar
- NPSH = 1,2m
- Inlet flange = DN65, PN40
- Outlet flange = DN40, PN 40



EQUIPMENT FOR ROAD TANKERS**MEASUREMENT TECHNOLOGY**
CORIOLIS

- Flexible layout of connections (90° or 180° run)
- Expansion of preset option at any time
- Coriolis-Meter in a exclusive design
- Space saving installation
- Electronical register in Ex de-execution
- Datatransmission via MODBUS-Interface
- Filling optionally in kilograms and / or liters
- Density registration and report (upon need)

LPG-CONTROL
MID400

EQUIPMENT FOR ROAD TANKERS**MEASUREMENT TECHNOLOGY**
CORIOLIS

- Accuracy Class 1
- Case in Ex d (ia) II B T6
- Power supply 24 VDC
- Memory of deliveries: 300
- Memory of changes: 250
- Memory of troubles: 200
- Minimum flow rate: 60l/min – 40kg/min
- Maximum flow rate: 450l/min – 220kg/min
- Minimum measured quantity: 50l/min – 25kg/min

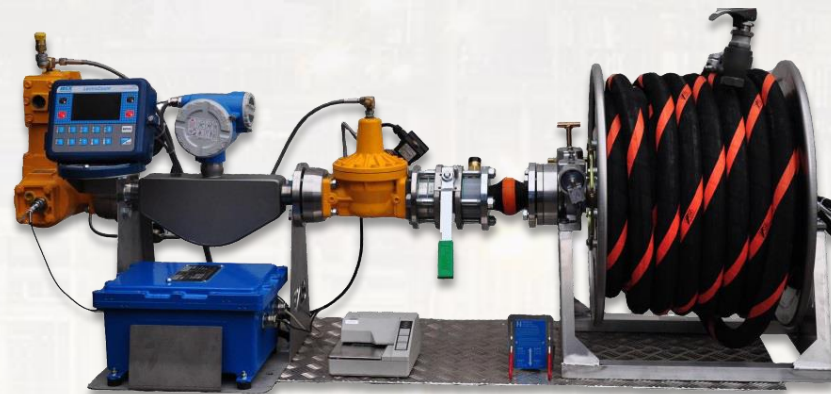
LPG-CONTROL
MID400

EQUIPMENT FOR ROAD TANKERS

➤ MEASUREMENT TECHNOLOGY CORIOLIS & MECHANICAL

- Other combinations consisting of measurement equipment like registers, receipt printers etc. are available.

FAS Cori-Series TE550 + CORIOLIS



Typ LC - MECHANICAL



EQUIPMENT FOR ROAD TANKERS

➤ LIQUID LEVEL GAUGES

FAS + ROCHESTER

- Liquid level indicators
- Horizontal installation position
- 4" and 8" Scale
- Special version for transportable storage tank
- Manufacturer: **FAS** or **ROCHESTER**



EQUIPMENT FOR ROAD TANKERS**HOSE REELS**
LIGHT VERSION

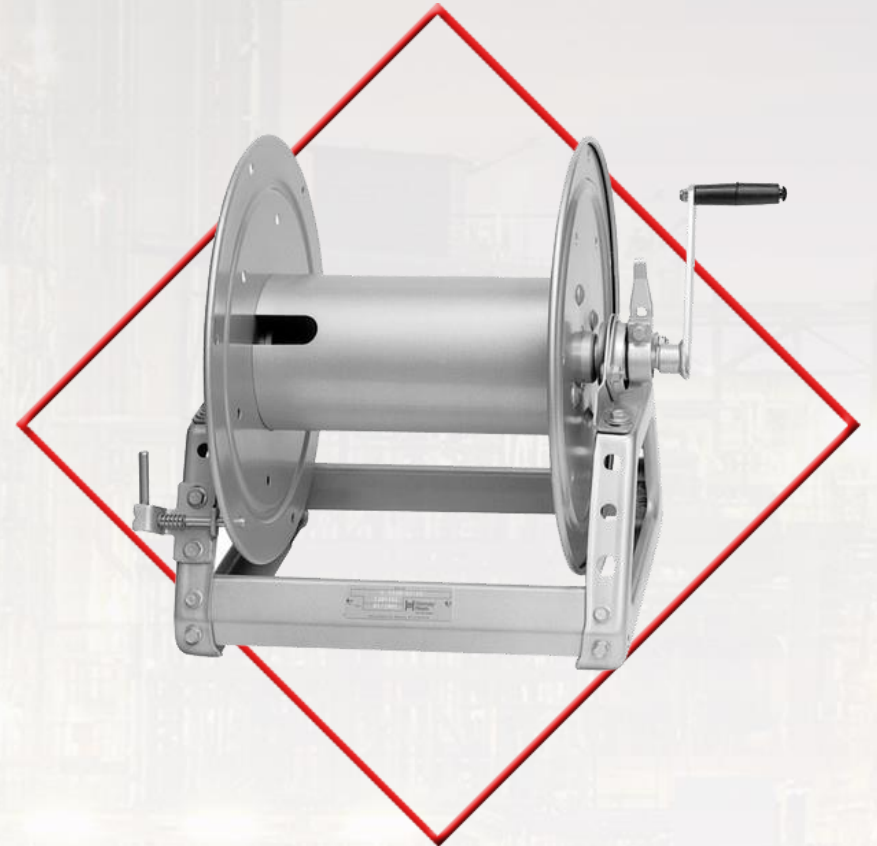
- For manual-, hydraulic-, or air pressure drive
- For up to 40 Meters of DN32 LPG-Hose
- Connections: Inlet DN32 - Outlet 1 ½"
- More compact version
- Lighter design
- Space-saving mounting
- Special versions and solutions available
- Optional supply with high-pressure hose



EQUIPMENT FOR ROAD TANKERS

➤ HOSE REELS

- For manual-, hydraulic-, or air pressure drive
- For up to 40 Meters of DN32 LPG-Hose



EQUIPMENT FOR ROAD TANKERS

▶ VALVES & FITTINGS
FOR LPG-APPLICATIONS

- Internal valves Type A3217 - A3213 - A3212
- Safety valves Type A8434 and more
- Filling connections Type A7797A and more
- Couplings/Adapters Type 3195
- More than 5000 articles are available

REGGO®



EQUIPMENT FOR ROAD TANKERS

➤ TEST & CONTROL TECHNOLOGY FOR VERIFICATION OF METERING UNITS

- Max. flow rate 1000l/min
- Connection: Inlet and outlet 1 ¾" ACME
- Power supply 230V or 24V
- Coriolis mass flow meter
- Electronic register
- Counter for kilogram and litres
- Density measurement



YOUR BENEFIT FROM JOINING FAS

- **GAIN ACCESS TO THE BIGGEST WAREHOUSE STOCK OF ROADTANKER EQUIPMENT IN EUROPE**
- **COMPETITIVE PRICING FOR YOUR PRODUCTS**
- **OPTION OF SET-ORDERS IS AVAILABLE**
- **JUST-IN-TIME DELIVERY FOR YOUR PRODUCTION**
- **DOORWAY TO YOUR PERSONAL TECHNICAL & METROLOGICAL CONSULTATION**
- **JOINT DEVELOPMENT FOR YOUR CUSTOMIZED SOLUTION**

It is quality that matters!



© Viperagg

Looking forward to a good cooperation