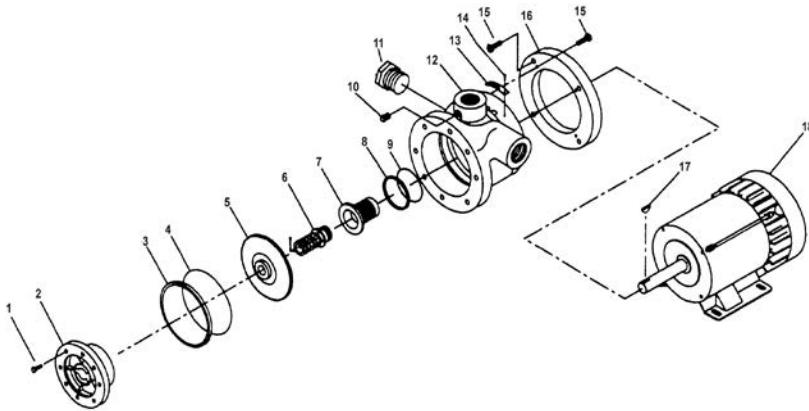


Solutions beyond products...  
**CORKEN** COROFLO PUMPS  
 ITEX

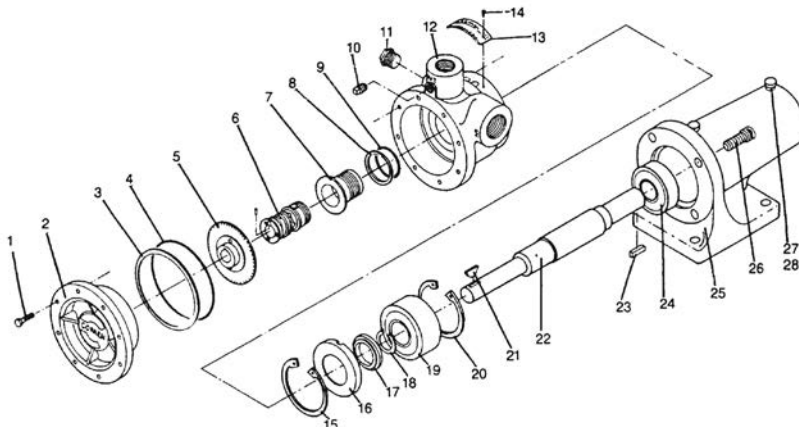
### "C" MODEL PUMPS



CAUTION: Always relieve pressure in the unit before attempting any repairs.

RMI Part No.	Ref No.	Description	Qty.
7001-031NC100A	1	Hex head cap screw	8
1014	3	Case clearance shim (.002" red)	As req.
1014-1		Case clearance shim (.003" green)	As req.
2-246A	4	Case O-ring (non-teflon)	1
1003-09	5	Impeller, brass - model 9	1
1003-0		Impeller, brass - model 10	1
1003-2		Impeller, brass - model 12	1
1003-3		Impeller, brass - model 13	1
1003-4		Impeller, brass - model 14	1
1003-5		Impeller, brass - model 15	1
113-CXA	6	Seal Assembly	1
1004-1X	7	Seal Housing, steel (non-teflon O-rings)	1
1013	8	Housing adjustment shim (.010")	As req.
101301		Housing adjustment shim (.020")	As req.
2-224A	9	Housing O-ring	1
3442	10	Pipe plug, 1/4" NPT	1
3444	11	Pipe plug, 3/4" NPT	1
1914-1	13	Nameplate	1
7012-006SF019E	14	Phillips head screw 6-32 x 1/4"	2
7002-037NC087A	15	Socket head cap screw	8
1015	16	Adapter ring	1
2497	17	Woodruff key, steel	1
2555	18	Motor 3/4 hp models 9, 10	1
2556		Motor 1 hp model 12	1
2557 <sup>9</sup>		Motor 3 hp models 14, 15	1
2895 <sup>5</sup>		Motor 3/4 hp, obsolete models 9E, 10	1
2896 <sup>6</sup>		Motor 1 1/2 hp, obsolete model 12E	1
4261 <sup>4</sup>		Motor 2 hp model 13	1

### "F" MODEL PUMPS

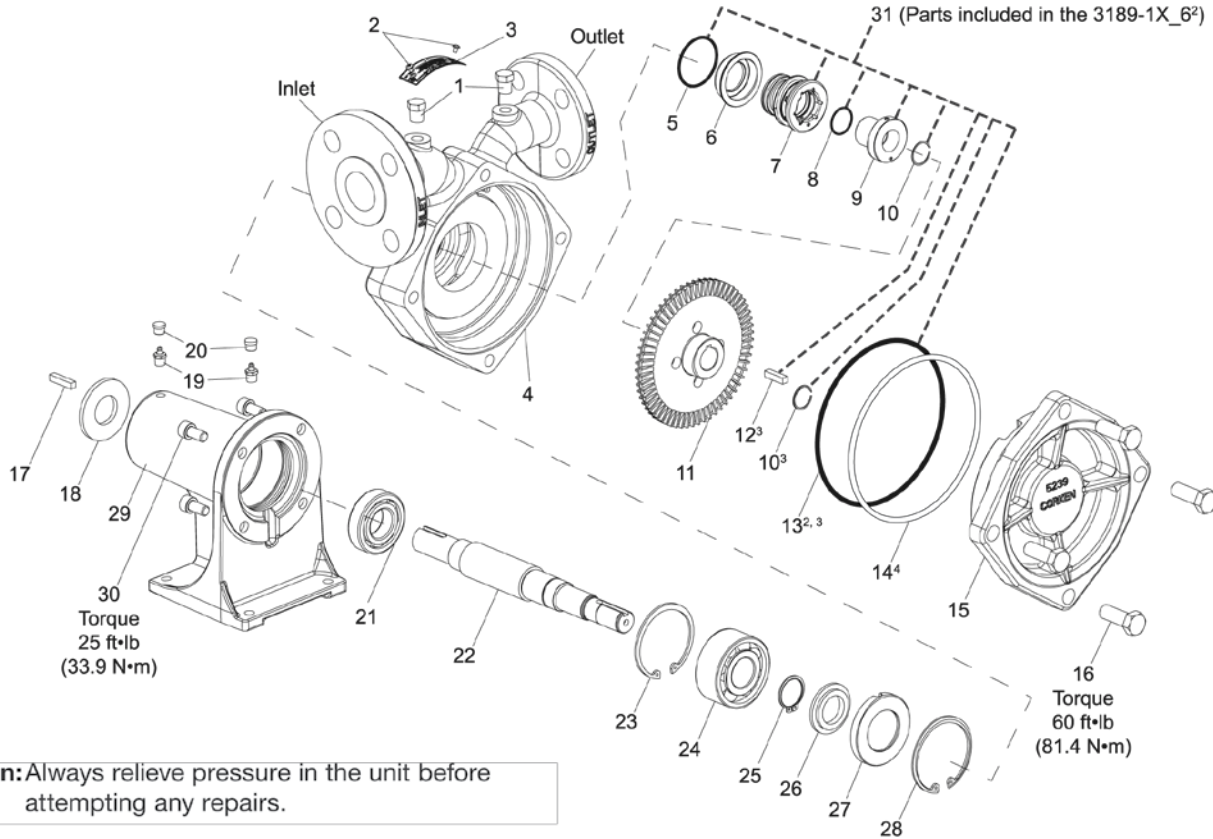


CAUTION: Always relieve pressure in the unit before attempting any repairs.

RMI Part No.	Ref No.	Description	Qty.
7001-031NC100A	1	Hex head cap screw	8
1014	3	Case clearance shim (.002" red)	As req.
1014-1		Case clearance shim (.003" green)	As req.
2-246A	4	Case O-ring (non-teflon)	1
1003-09	5	Impeller, brass - model 9	1
1003-0		Impeller, brass - model 10	1
1003-2		Impeller, brass - model 12	1
1003-3		Impeller, brass - model 13	1
1003-4		Impeller, brass - model 14	1
1003-5		Impeller, brass - model 15	1
113-CXA	6	Seal Assembly	1
1004-1X	7	Seal Housing, steel (non-teflon O-rings)	1
1013	8	Housing adjustment shim (.010")	As req.
1013-1		Housing adjustment shim (.020")	As req.
2-224A	9	Housing O-ring	1
3442	10	Pipe plug, 1/4" NPT	1
3444	11	Pipe plug, 3/4" NPT	1
1914-1	13	Nameplate	1
7012-006SF019E	14	Phillips head screw 6-32 x 1/4"	2
5002-281	15	Bearing retainer ring	1
1238	16	Bearing cap	1
1006	17	Grease seal	1
5102-118	18	Bearing retainer ring	1
2758	19	Ball bearing	1
5000-281	20	Bearing retainer ring	1
2497	21	#5 Woodruff key, steel	1
1234	22	Shaft	1
3226	23	key	1
2759	24	Ball bearing	1
1010-2	25	Frame	1
7002-037NC087A	26	Socket headscrew	4
2158	27	Grease zerk	2
2159	28	Lubricap	2



## FF SERIES AUTOGAS PUMPS



**Caution:** Always relieve pressure in the unit before attempting any repairs.

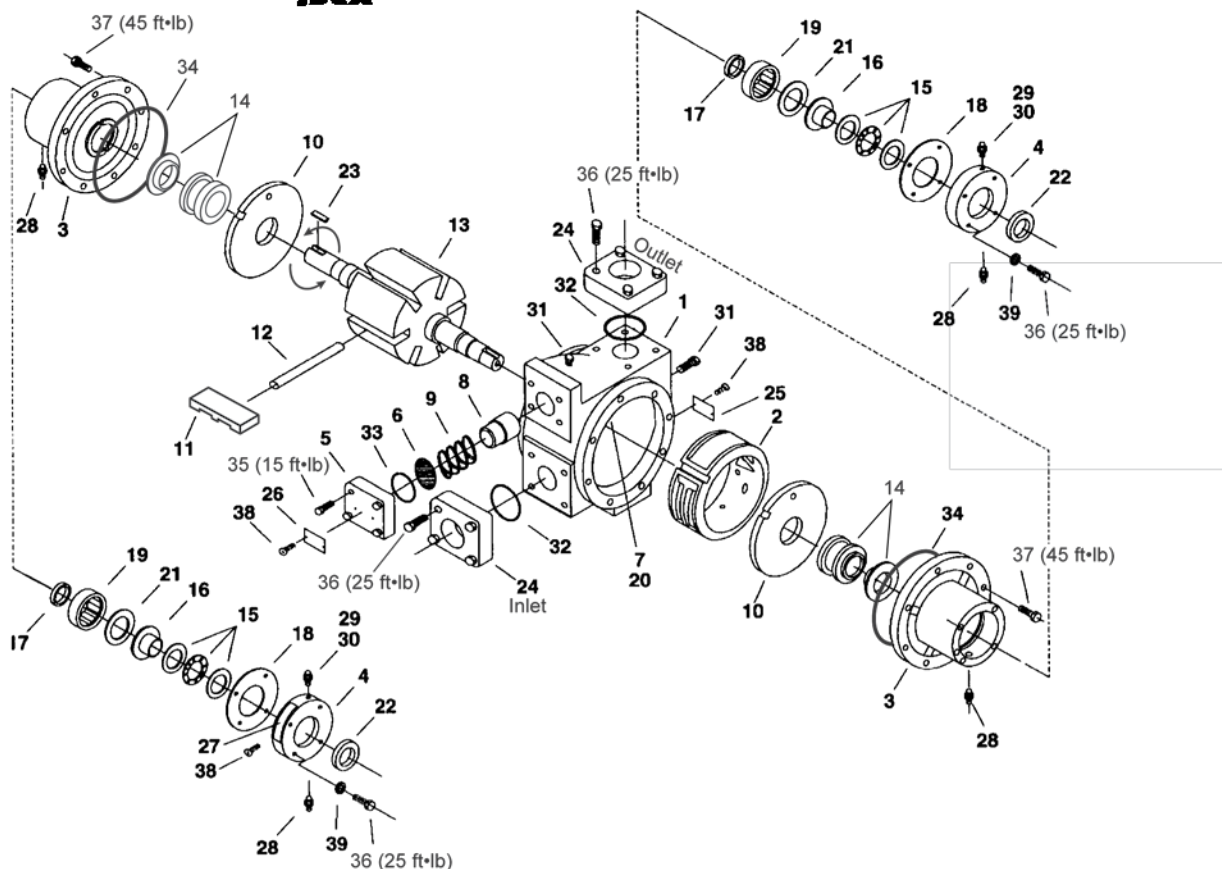
RMI Part No.	Ref No.	Description	Qty.
3442	1	1/4" pipe plug	2
7012-0065F019E	2	Nameplate screw	2
1914-1	3	Nameplate	1
5238-060	4	060 Case – ANSI flange (FF)	1
5238-75		075 Case – ANSI flange (FF)	1
5238		150 Case – ANSI flange (FF)	1
5238-061		060 Case – DIN flange (FD)	1
5238-751		075 Case – DIN flange (FD)	1
5238-1	5	150 Case – DIN flange (FD)	1
2-133A		Seal Housing O-ring	1
5244-1X	6	Seal Housing assembly	1
Not sold separately	7	Seal sub assembly	1
2-108A	8	Seal sleeve O-ring	1
Not sold separately	9	Seal sleeve assembly	1
2760-88	10	7/8" retainer ring	1
5240-060	11	060 Impeller (bronze)	1
5240-75		075 Impeller (bronze)	1
5240		150 Impeller (bronze)	1
5240-061		060 Impeller (stainless steel)	1
5240-751		075 Impeller (stainless steel)	1
5240-1		150 Impeller (stainless steel)	1
5240-062		060 Impeller (steel)	1
5240-752		075 Impeller (steel)	1
5240-2		150 Impeller (steel)	1
4244		12	Impeller key

RMI Part No.	Ref No.	Description	Qty.
2-260A	13	Case O-ring	1
5248	14	Case clearance shim	1
5239-060	15	060-Cover	1
5239-75		075-Cover	1
5239		150-Cover	1
7301-140MC040A	16	M14-2 x 40mm hex head bolt	4
3226	17	Shaft key	1
3227	18	Bearing plate	1
2158	19	Grease zerk	2
2159	20	Lubricap	2
2759	21	Single row ball bearing	1
5241-1	22	Shaft	1
5000-281	23	Retainer ring	1
2758	24	Double row ball bearing	1
5102-118	25	Retainer ring	1
1006	26	Grease seal	1
1238	27	Bearing cap	1
5002-281	28	Retainer ring	1
1010-3	29	Mounting frame	1
7302-100MC020A	30	M10-1.5 x 22mm Allen head bolt	4
3189-1X_6	31	Seal assembly	1

PUMPS, COMPRESSORS & BY-PASS VALVES



Z2000 MODELS



RMI Part No.	Ref No.	Description	Qty.
4413	1	Case	1
4414**	2	Cam	1
4416	3	Head	2
4417	4	Bearing Cap	2
1174-3	5	Relief valve cap	1
4282	6	Shim (Z2000, ZH2000)	1
4424	7	Cam key	1
4425	8	Relief valve	1
4426		Relief valve spring (Z2000, ZH2000)	1
1240	9	Relief valve spring (ZX2000, ZXH2000)	1
4427**	10	Sideplate	1
4428*	11	Vane	6
4262-X*	12	Vane driver (Push Rod)	3
4430-X2R	13	Rotor-shaft assembly	1
4431-XA2*	14	Mechanical seal assembly	2
4432*	15	Thrust bearing assembly	2
4435*	16	Bearing race mounting ring	2
4438	17	Grease seal	2
4439*		Bearing cap shim (.002) red	As req.
4439-1*	18	Bearing cap shim (.010) brown	As req.
4439-2*		Bearing cap shim (.020) yellow	As req.
2754-X*	19	Bearing	2
3253	20	Cam key pin	2

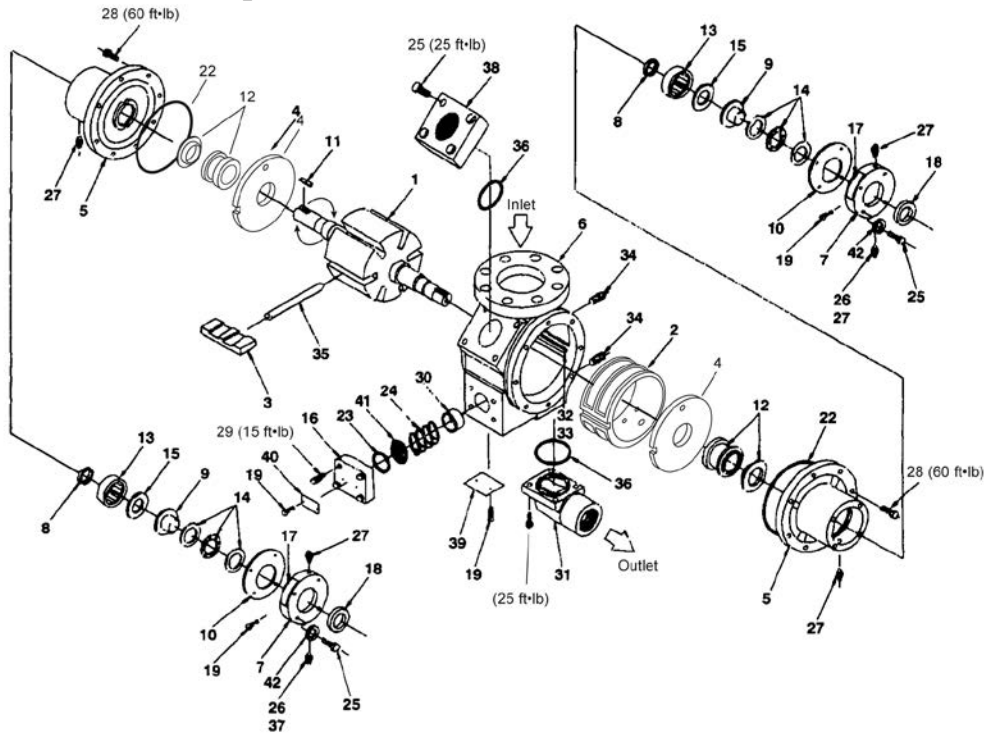
RMI Part No.	Ref No.	Description	Qty.
2760-244	21	Retainer ring	2
4441*	22	Grease seal	2
2270*	23	Shaft key-1/4" x 1 9/16"	2
4479-2	24	Flange-2" NPT	2
4479-2S		Flange-2" welded	
2649	25	Nameplate	1
4248	26	Relief valve nameplate (Z2000, ZH2000)	1
4248-1		Relief valve nameplate (ZX2000, ZXH2000)	1
1359	27	Lubrication instruction plate	2
1343	28	1/8" NPT relief fitting	4
2158	29	1/8" NPT grease zerk	2
2159	30	Lubricap	2
3442	31	1/4" NPT pipe plug	2
2-231A*	32	O-ring - flange*	2
2-224A*	33	O-ring - relief valve cap*	1
2-261A	34	O-ring - case	2
7001-031-NC125A	35	Bolt - hexagon head	4
7001-037-NC150A	36	Bolt - hexagon head	16
7001-043-NC125A	37	Bolt - hexagon head	16
7012-006-SF025E	38	Screw	8
7206-037A	39	Lockwasher	8
3193-X1		Repair Kit	1
3194-X1		Rebuild Kit	1

\* Included in repair kit

\*\* Included in rebuild kit, plus all item in repair kit

Solutions beyond products...  
**CORKEN**  
 ITEX

Z3200 MODELS



PUMPS, COMPRESSORS & BY-PASS VALVES

RMI Part No.	Ref No.	Description	Qty.
4495-X2R	1	Rotor shaft assembly	1
4242**	2	Cam	1
4232*	3	Vane	6
4231**	2	Sideplate	2
4488	5	Head	2
4239	6	Case	1
4417	7	Bearing cap	2
4438	8	Grease seal	2
4435*	9	Mounting ring	2
4439*		Bearing shim (.002) red	As req.
4439-1*	10	Bearing shim (.010) brown	As req.
4439-2*		Bearing shim (.020) yellow	As req.
2270*	11	Shaft key	2
4431-XA2*	12	Mech. seal assembly	2
2754**	13	Bearing outer race	2
4432*	14	Thrust bearing assembly	2
2760-244	15	Retainer ring	2
1174-2	16	Relief valve cap	1
1359	17	Lubrication instruction plate	2
4441*	18	Grease seal	2
7012-006SF019E	19	Screw	8
-	20	Not shown	-
-	21	Not shown	-
2-262A	22	O-ring - Case	2
2-224A*	23	O-ring - relief valve cap	1
1240	24	Relief valve spring	1
7001-037NC150A	25	Bolt 3/8"-16 x 1 1/2" hex head	16
2158	26	1/8" NPT grease zerk	2

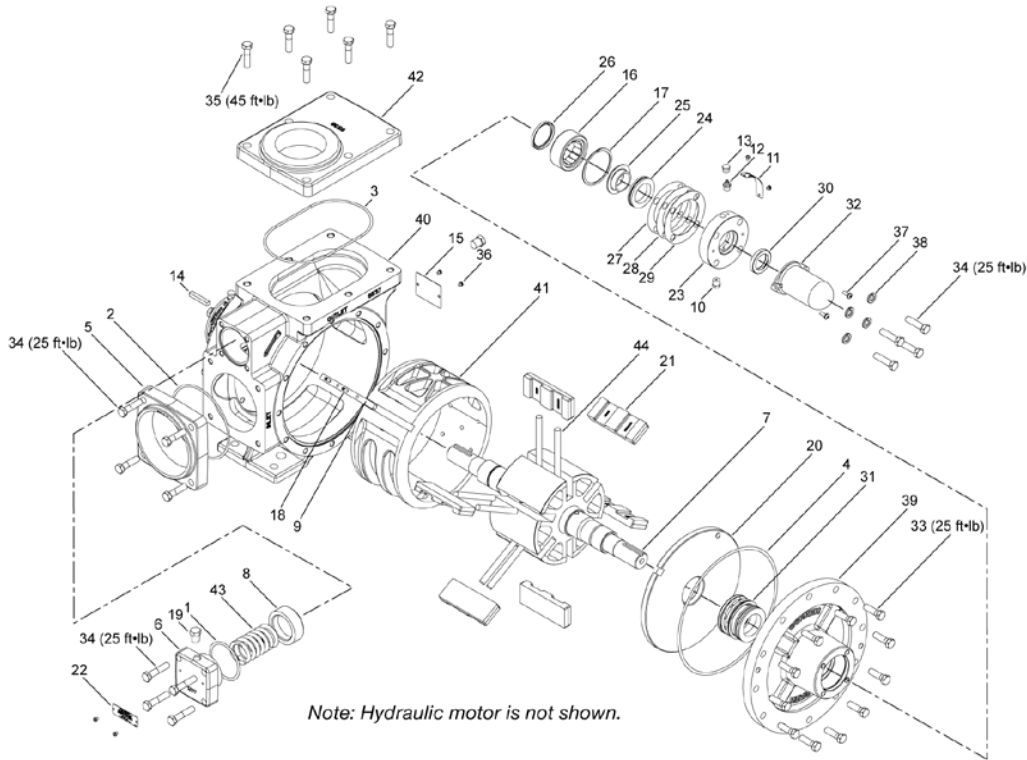
RMI Part No.	Ref No.	Description	Qty.
1343	27	1/8" NPT relief fitting	4
7001-050NC150A	28	Bolt-1/2-13 x 1 1/2" hex head	16
7001-031NC125A	29	Bolt-5/16-16 x 1 1/4" hex head	4
1241	30	Relief valve	1
1172-1.5		Outlet flange - 1.5" NPT	1
1172-1.5S	31	Outlet flange - 1.5" WF	1
1172-2		Outlet flange - 2" NPT	1
1172-2S		Outlet flange - 2" WF	1
1947		Outlet flange - 1.5" NPT ell	1
4243		Outlet flange - 2" NPT ell	1
4241	32	Cam key	1
3253	33	Cam key pin	1
3442	34	1/4" NPT pipe plug	1
4262-X*	35	Vane driver	3
2-234A*	36	O-ring-flange	1
2159	37	Lubricap	2
1172-1.5		Aux. inlet flange - 1.5" NPT	1
1172-15S		Aux. inlet flange - 1.5" WF	1
1172-2		Aux. inlet flange - 2" NPT	1
1172-2S	38	Aux. inlet flange - 2" WF	1
1920-3		Aux. inlet flange - blind	1
4243		Aux. inlet flange - 2" NPT ell	1
2649	39	Nameplate	1
4248	40	Relief valve nameplate	1
4242	41	Relief valve shim	As req.
7206-037A	42	3/8" Lockwasher	8
3195-X1		Repair kit	1
3196-X1		Rebuild kit	1

\* Included in repair kit

\*\* Included in rebuild kit, plus all item in repair kit



## Z3500 MODELS



Note: Hydraulic motor is not shown.

CAUTION: Always relieve pressure in the unit before attempting any repairs.

RMI Part No.	Ref No.	Description	Qty.
2-228A*	1	O-ring	1
2-254A	2	O-ring	1
2-259A	3	O-ring	1
2-268A	4	O-ring	2
1206-3	5	Inlet flange – 3" NPT	1
1206-4		Inlet flange – 4" NPT	1
1206-3S		Inlet flange – 3" WF	1
1206-4S		Inlet flange – 4" WF	1
1207-2	6	Relief valve cap	1
1208-1X6R	7	Rotor shaft assembly	1
1224	8	Relief valve	1
13009	9	Cam key	1
1343	10	Grease relief fitting	4
1359	11	Lubrication plate	2
2158	12	Grease zerk	2
2159	13	Lubricap	2
2270*	14	Shaft key – 1/4" 1	
2649	15	Nameplate	1
2754**	16	Outer bearing	2
2760-244	17	Retainer ring	2
3253	18	Cam key pin	2
3442	19	Pipe plug – 1/4" NPT	2
3935**	20	Sideplate	2
3936*	21	Vane	6
4248	22	Relief Valve warning tag	1

RMI Part No.	Ref No.	Description	Qty.
4417	23	Bearing cap	2
4432*	24	Thrust bearing assembly	2
4435*	25	Thrust bearing mounting ring	2
4438	26	Grease seal / Oil seal	2
4439*	27	Bearing cap shim – 0.002"	2
4439-1*	28	Bearing cap shim – 0.010"	2
4439-2*	29	Bearing cap shim – 0.020"	2
4441*	30	Grease seal	2
4431-XA2	31	Mechanical seal assembly	2
4985	32	Coro-Vane shaft cover	1
7001-037NC125A	33	Hex head bolt	24
7001-037NC150A	34	Hex head bolt	16
7001-043NC150A	35	Hex head bolt	6
7012-006SF019E	36	Screw	9
7012-010SF050E	37	Screw	2
7206-037A	38	Lockwasher – 0.375"	8
5534	39	Head	2
5537	40	Case	1
5539**	41	Cam	1
5538	42	Outlet flange – 3" NPT Elongated	1
5538-3S		Outlet flange – 3" WF Elongated	1
5548	43	Spring	1
5554-X*	44	Vane driver	6
3195-X2		Repair Kit	1
3196-X2		Rebuild Kit	1

\* Included in repair kit

\*\* Included in rebuild kit, plus all item in repair kit



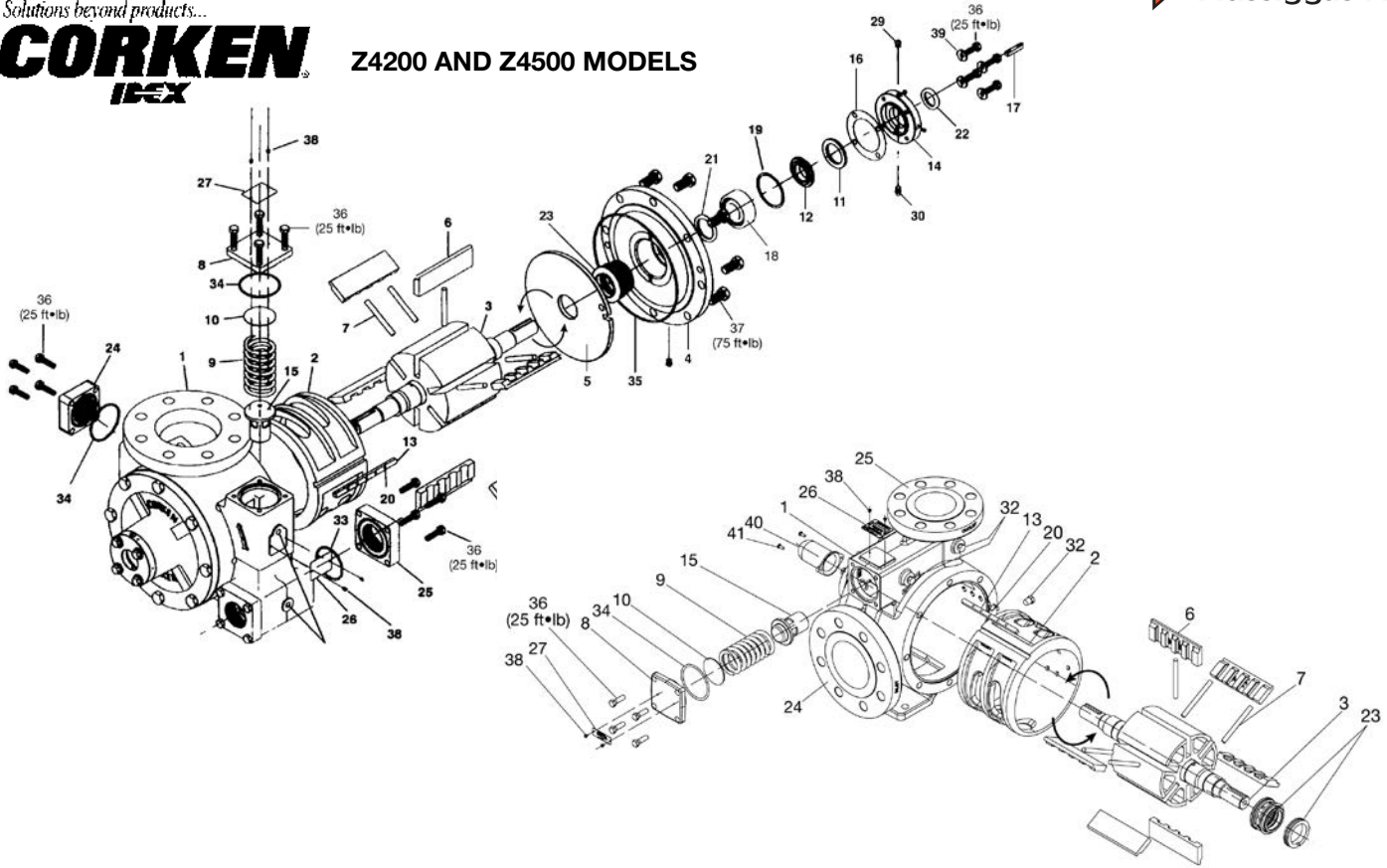
# 111 Corken Repair Parts

Solutions beyond products...

## CORKEN

IFX

### Z4200 AND Z4500 MODELS



PUMPS, COMPRESSORS & BY-PASS VALVES

RMI Part No.	Ref No.	Description	Qty.
5522	1	Case Z4500	1
4442	1	Case Z4200	1
4443**	2	Cam	1
4444-X2R	3	Rotor-shaft assembly	1
4445	4	Head	2
4446**	5	Sideplate	2
4448*	6	Vane	6
4449-X*	7	Vane driver	5
4450	8	Relief valve cap	1
4451	9	Relief valve spring	1
4452	10	Shim	1
4453*	11	Thrust bearing assembly	2
4454*	12	Bearing race mounting ring	2
4455	13	Cam key	1
4456	14	Bearing cap	2
4457	15	Relief valve	1
4458*		Bearing cap shim (.002) red	As req.
4458-1*	16	Bearing cap shim (.010) brown	As req.
4458-2*		Bearing cap shim (.020) yellow	As req.
4459*	17	Shaft key—5/16 x 1-3/4	1
4460-X*	18	Roller bearing	2
2760-283	19	Retainer ring	2
3253	20	Cam key pin	5
4462	21	Grease seal	2
4463*	22	Grease seal	2
4464-XA2*	23	Mechanical seal assembly	2

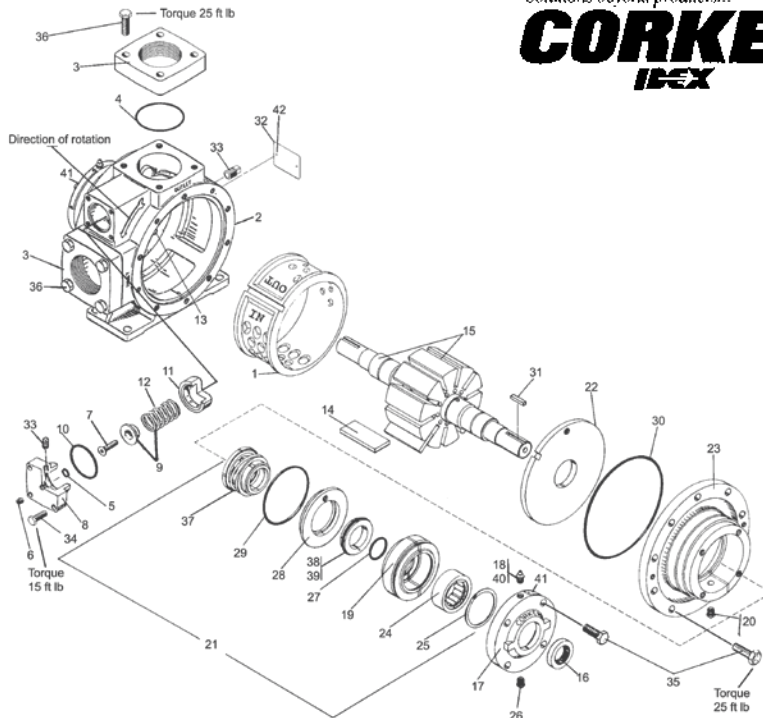
RMI Part No.	Ref No.	Description	Qty.
1172-2		Aux. inlet flange—2" NPT	1
1172-2S	24	Aux. inlet flange—2" WF	1
1920-3		Aux. inlet flange—blind	1
4479-2S	25	Discharge flange—2" WF	2
4981-2		Discharge flange—2" NPT	2
2649	26	Nameplate	1
4248	27	Relief valve nameplate	1
1359	28	Lubrication instruction plate	2
1343	29	1/8 NPT relief fitting	4
2158	30	1/8 NPT grease zerk	2
2159	31	Lubricap	2
3442	32	1/4 NPT pipe plug	2
2-231A*	33	O-ring—discharge flange	2
2-234A*	34	O-ring—auxiliary inlet flange	1
2-270A	35	O-ring—case	2
7001-037NC150A	36	Bolt—hexagon head	24
7001-062NC125A	37	Bolt—hexagon head	16
7012-006SF019E	38	Screw	8
7206-037A	39	Lockwasher	8
4985	40	Shaft cover	1
7012-010SF050E	41	Screw	2
3197-X1		Repair Kit	1
3198-X1		Rebuild Kit	1

\* Included in repair kit

\*\* Included in rebuild kit, plus all item in repair kit

Solutions beyond products...

## CORKEN 521 AND 1021 MODELS

RMI Part No.	Ref No.	Description	Qty.
1162-2	1	Cam (521)	1
1201-2		Cam (1021)	1
2832	2	Case (521)	1
2841		Case (1021)	1
1172-2.5	3	2.5 Flange (521)	1
1172-2		2" Flange (521)	1
1206-3		3" Flange (1021)	2
2-234A*		Flange O-ring (521)	2
2-245A*	4	Flange O-ring 3" (1021)	2
2-249A*		Flange O-ring 4" (1021)	2
2-112A*	5	Adjusting screw O-ring	1
2590	6	Flush steel plug 1/8" NPT	1
2252	7	Relief valve adjusting screw	1
1174	8	Valve cap (521)	1
1207		Valve cap (1021)	1
1242-X	9	Relief valve spring & guide (521)	1
1227		Relief valve spring guide (1021)	1
2-224A*	10	Relief valve cap O-ring (521)	1
2-228A*		Relief valve cap O-ring (1021)	1
1241	11	Relief valve (521)	1
1224		Relief valve (1021)	1
1242	12	Relief valve spring (521)	1
1226		Relief valve spring (1021)	1
1170	13	Cam key (521)	1
1309		Cam key (1021)	1
1168-7*	14	Blade (521)	10
1308-9*		Blade (1021)	10
1166-1X1R	15	Rotor & shaft assembly (521)	1
1208-1X1R		Rotor & shaft assembly (1021)	1
1358*	16	Grease seal	2
1164-1	17	Bearing cap	2
2158	18	Grease zerk 1/8" NPT	2
1769	19	Bearing housing	2
1343	20	Relief fitting (seal vent)	2

RMI Part No.	Ref No.	Description	Qty.
1769-XA*	21	Seal assembly	2
1769-XRA*		Seal assembly – replacement	2
1163-2*	22	Side plate (521)	2
1209-1*		Sideplate (1021)	2
1161-4	23	Head (521)	2
1206-4		Head (1021)	2
2754-X*	24	Roller bearing – complete	2
2755		Bearing inner race	2
2754		Bearing outer race	2
2760-244	25	Retainer ring	2
1343	26	Relief filling (grease)	2
2-128A	27	Shaft O-ring	2
1822	28	Seat adapter plate	2
2-240A	29	O-ring BUNA	2
2-261A*	30	Case O-ring (521)	2
2-268A*		Case O-ring (1021)	2
2270	31	1/4" key	2
2949	32	nameplate	1
3442	33	1/4" NPT plug	1
7001-031NC125A	34	Hex head bolt 5/16-18 x 1 1/4" (521)	4
7001-037NC125A		Hex head bolt 3/8-16 x 1 1/4" (1021)	4
7001-037NC125A	35	Hex head bolt 3/8-16 x 1 1/4" (521)	28
7001-037NC125A		Hex head bolt 3/8-16 x 1 1/4" (1021)	32
7001-037NC150A	36	Hex head bolt 3/8-16 x 1 1/2"	8
--	37	Retainer	2
--	38	Seal seat	2
2-227A*	39	Seal seat O-ring	2
2159	40	Lubricap #2	2
1359	41	Lubrication instruction tag	2
7003-004DR0198	42	Round head plated drive screw 4 x 3/16	2
2904-X2		Repair Kit for 521	1
2906-X2		Repair Kit for 1021	1

\* Included in repair kit

\*\* Included in rebuild kit, plus all item in repair kit