

LC Meter / Liquid Controls Meters

Liquid Controls produces the most reliable and accurate metering systems for the LP gas industry worldwide. With LC meters installed on your delivery vehicles, at your bulk terminal or in your plant, you can count on years of reliable, accurate performance. Liquid Controls produces the most reliable and accurate metering systems for the LP gas industry worldwide. With LC meters installed on your delivery vehicles, at your bulk terminal or in your plant, you can count on years of reliable, accurate performance.

LC meters perform well with any liquid, including "dry" liquids with very low viscosity and lubricity like liquid propane gas. LC meters are exclusively designed with no metal-to-metal contact inside the measuring chamber. This feature minimizes wear, contributes to the meters' accuracy and ensures long, reliable service life with significantly lower maintenance and operating costs.

LC meters' unique construction results in low pressure drop, delivering superior performance with minimal additional demand on system pumps. LC meters are dependable in systems with older mechanical registration devices, or with the new electronic registers like LectroCount™ which provide increased efficiencies through automated data acquisition, on-site invoicing and real-time communication capability.

At Liquid Controls' ISO-certified facility in Lake Bluff, Illinois, LC meters are manufactured to last. Many LC meters, crafted with quality decades ago, are still in operation. From the beginning, they were never meant to become obsolete. That's why Liquid Controls stands by them and is the market leader for custody transfer LPG meters.

In all applications from transport and storage to industrial and agricultural use Liquid Controls metering systems not only save you money, but provide you with peace of mind. That's why you'll want your LPG dispensing systems to include a Liquid Controls meter.

MA™ Series meters for trucks

A new standard for LPG custody transfer accuracy. No metal-to-metal contact provides the longest, most reliable service in the industry. Compact, cost efficient package offers greater mounting flexibility. Accessories include vapor eliminator and strainer with 100-mesh or 200-mesh screen, diaphragm valve, choice of mechanical or electronic registration with optional temperature /volume compensation.



Capacity (Max. flow rate)
30 GPM to 200 GPM 115 to
760 L/min **Working pressure**
rating 350 PSI 24 BAR
Connections
1", 1 1/2", 2", 3" NPT, BSPT or
slip weld companion flanges



MSA™ Series meters for terminal applications

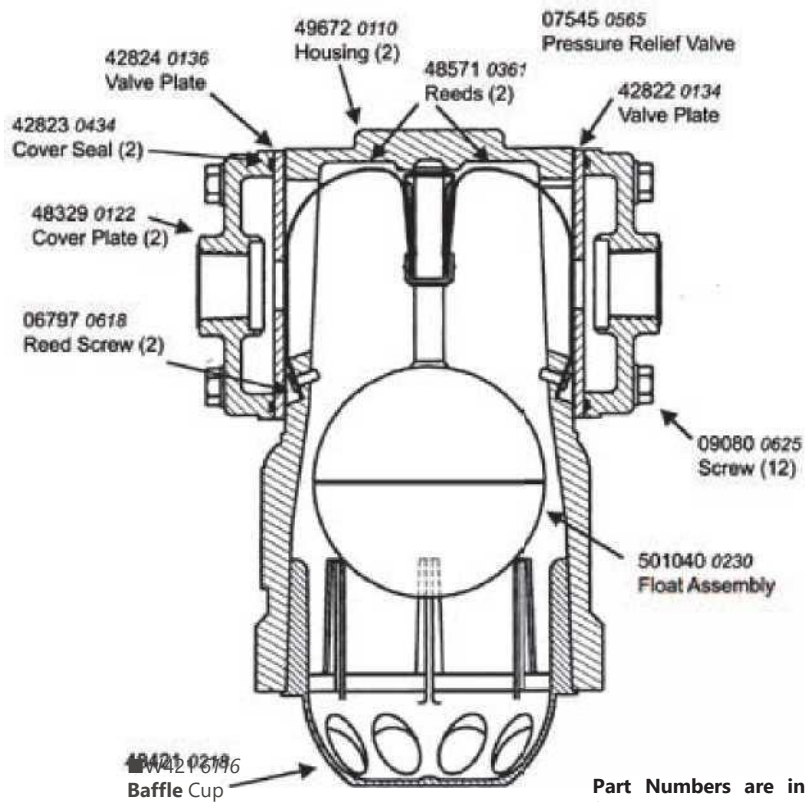
Housed in a steel spherical case pressure shell rated to 350 PSI working pressure, the MSA Series features the same high-quality meter elements that are the hallmark of Liquid Controls' outstanding metering technology. Completely integrated meter accessories are available, including high capacity bulk vapor eliminators, strainers and valves.



Capacity (Max. flow rate)
100 GPM to 1,000 GPM 380
to 3,785 L/min **Working**
pressure rating 350 PSI 24
BAR **Connections**
2", 3" 4" and 6" ANSI
flanges



Liquid Controls Air Eliminator Repair Parts



Part Numbers are in regular font Item numbers are in *italics*

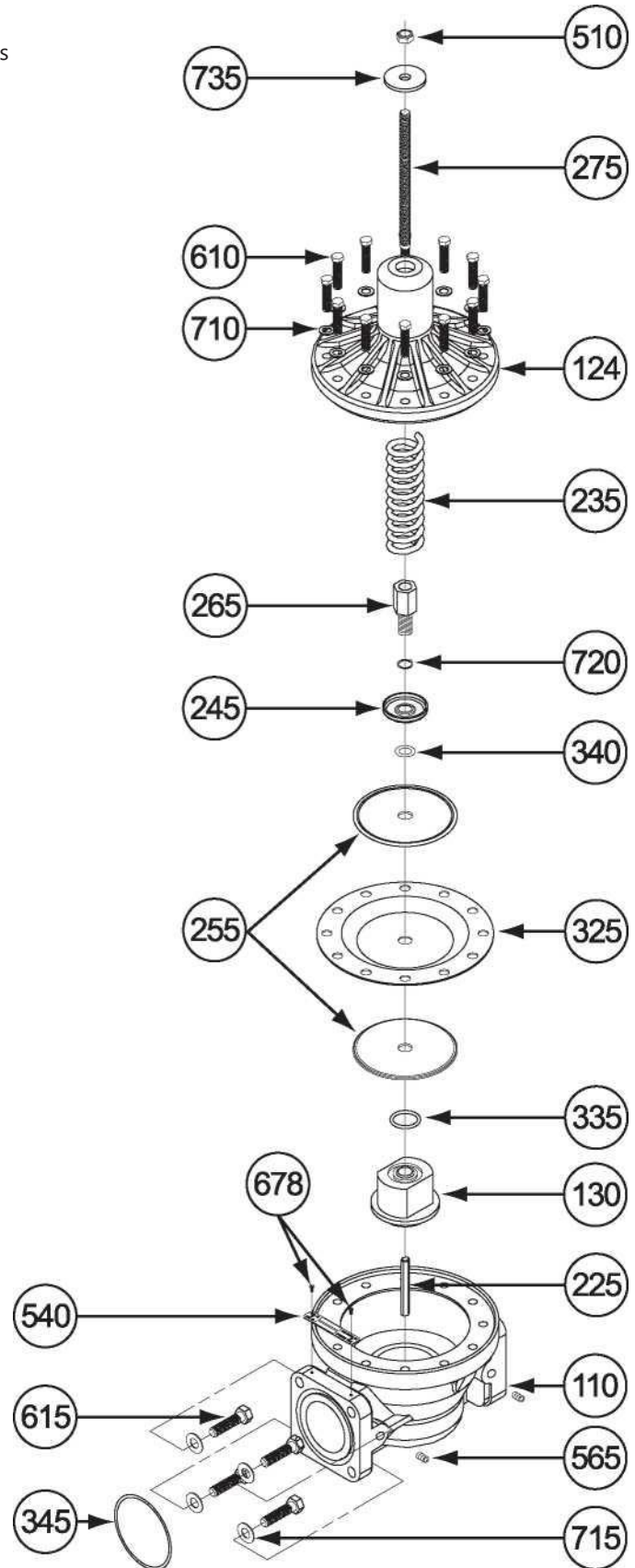
*** 4 cover gaskets (0434) are required on air eliminators with kairez seals**

Liquid Controls Differential Valve Repair Parts

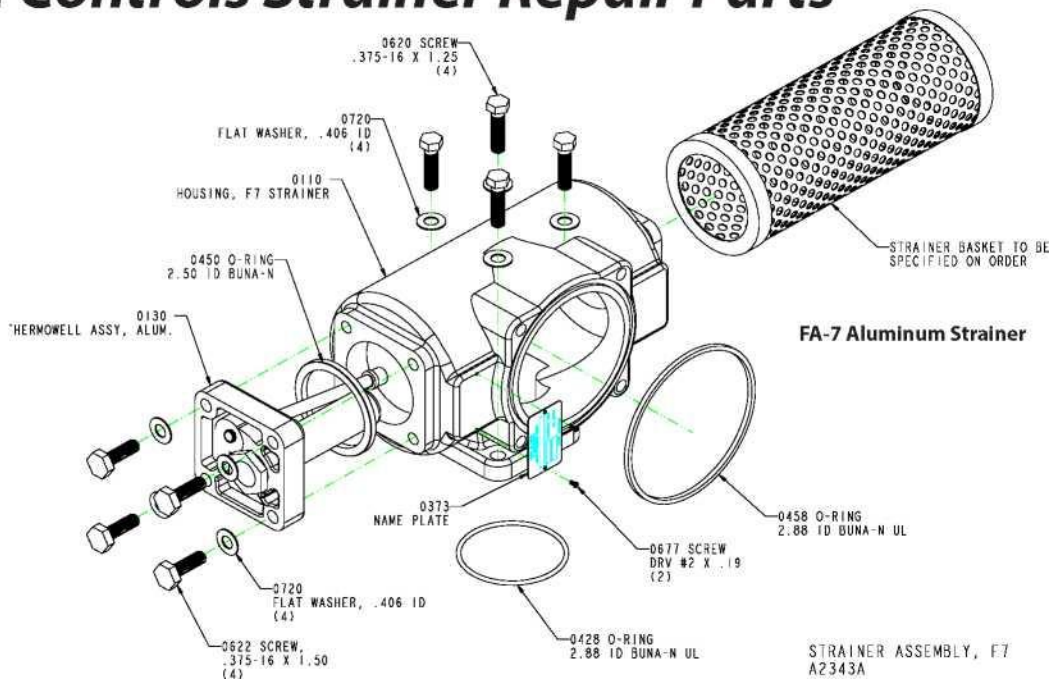
A2843 VrIve Assembly

NO TIE:: Items specific to the 49971 and 501339 assemblies are indicated as such.

| Item No. | Duscription | Prrt No |
|----------------------------|--|---------|
| 110 | Valve Housing Assembly | 47096 |
| 124 | Valve Cover | 47302 |
| 130 | Piston | 49947 |
| 225 | Piston Guise Shaft (Part of 47096 Assembly) | N/S* |
| 235 | Compression Spring [A2843, 501339 ooly] | 47305 |
| | Compression Spring [40971 ooly] | 49970 |
| 245 | Spring Retainer | 47307 |
| 255 | Back-up Plate (2) | 47308 |
| 265 | Stand-off | 47309 |
| 275 | Rod Assembly | 47098 |
| 325 | Diaphragm | 47306 |
| 335 | Buna-N O-Ring | 06856 |
| 340 | Buna-N O-Ring | 07900 |
| 345 | Buna-N O-Ring | 07838 |
| 510 | Nut 06 | 06055 |
| 540 | Nameplate | N/S |
| 565 | Pipe Plug (4) | 04759 |
| 610 | Screw (12) | 04655 |
| 615 | Screw (4) | 06851 |
| 678 | Screw (2) | 00306S |
| 710 | Flat Washer (12) [A2y43 ooly] | 04656 |
| | Flat Washer (12) [50971, 501339 ooly] | 09360 |
| 715 | Flat Washer (4) | 04498 |
| 720 | Lock Washer | 06070 |
| 735 | Flat Washer | 06663 |
| *N/S = Not for Sale | | |



Liquid Controls Strainer Repair Parts



APPLICABLE FOR STRAINERS MANUFACTURED AFTER APRIL, 2001 **Accessories**

| Item # | Part # | Qty | Description | Item # | Part # | Qty | Description |
|---------|-----------|-----|---|-----------------------------------|--------|-----|--|
| 0110 | 49425 | 1 | Ousino, F-7 Strainer, Anrized Aluminum | 0140 | 48861 | 1 | Cover, F-7 Strainer 300#, Aluminum |
| 0130 | 420 45420 | 1 | Thermowell Aosembis, Aluminum MA5/MA7, Strainm End Mtg. | 0681 | 06851 | 4 | Screw, .375-16 x 1.50, Hex OD Cap, GR 8 |
| 0200 | 404 48404 | 1 | Strainer Mainelal | 0779 | 04498 | 4 | Flat Washer, .406 ID, .812 OD x .062 Thk |
| 0373 | 419 48419 | 1 | Nameplate, Strainer A: ^ embis | 0387 | 07545 | 1 | Pressure Relief Valve |
| 0428 | 854 06854 | 1 | O-Ring, 2.88 ID Buna-N UL, 3.12 OD x .22DiaV2all | 0321 | 43518 | 1 | Vapor Orifice Connector |
| 0450 | 838 09338 | 1 | O-Ring, 2.50 ID Bun a-N, 3.00 O D o .25 Scj i- Wall | Strainer Baskets, Stainless Steel | | | |
| 0458 | 847 06847 | 1 | O-Ring, 1.75 ID Buna-N, 5.00 ODX .12Sor Wall | XXX5 | A2431 | 1 | Basket, Strainer F-7, 80 Mesh SS |
| 0620 | 444 04444 | 4 | Screw, .37e-1(^ x 1.25, Hex OD Cap, GR (3 | XXX5 | A2432 | 1 | Basket, Strainer F-7, 3XX Mesh SS |
| 0622 | 06851 | 4 | Screw, .37e-16x 1.50, Hex OD Cap, CSF? 8 | XXX5 | A2439 | 1 | Basket, Strainer FA7, 200 Mesh SS - Standard |
| 0677 | 806 00306 | 2 | Screw, Drv #2 x.19 "T"ape "U" | | | | |
| 0720.04 | 498 04498 | 8 | Flat Washer, .406 ID, .812 OD x .062 Thk | | | | |

Liquid Controls Back Check Repair Parts

Model A2885 (Ftr LPG)

(Used tn meters sold AFTER December 19, 199(beginning with Serial No. 225233)

Model A2883 (Ftr LPG)

(Used on mstars sold BEFORE Decembe 19i 1911 ending with Serial No. 225232)

| Item No. | Description | Part No. | Item No. | Description | Part No. |
|----------|-------------------------|------------------|----------|-------------------------|----------|
| 486 | Bearing | N/S | 486 | Bepring | N/S |
| 07321 | Buna-R O-Ring | 0685-1 | 473 | Buna-R O-Ring | 06854 |
| 893 | Spiral Retaining Spring | 09137 | 393 | Spiral Retaining Spring | 09137 |
| 882 | Valve S5(3ring Holder | 48337 | 382 | Valve Spring) Solder | 48337 |
| 595 | Compression Spring | 09138 | 595 | Compression Spring | 09138 |
| 811e'm # | De lf Locking Rut (2) | Des0c9r1p4Dt3ieo | 875 | Self Pocki ng Rut (2) | 09143 |
| 452 | O-Ring (Retainer | 47974 | 452 | O-Ring Retainer | 47974 |
| 470 | Buna-R O-Ring | 09131 | 470 | Buna-R O-Ring | 09131 |
| 471 | Buna-R O-Ring | 09140 | 471 | Buna-R O-Ring | 09140 |
| 472 | Spacer | 47295 | 472 | Space- | 47295 |
| 133 | Piston | 47975 | 133 | Piston | 47975 |
| 265 | Valve Stem | R/S | 265 | Valve Stem | R/S |
| 485 | Bushing | 07867 | 485 | Bushing | 07867 |
| 114 | Check Valve Housing | 47973 | 114 | Check Valve Housing | 47994 |
| 920 | Valve Dore | R/S | 920 | Valve Dore | N/S |

